

# INSPECTOR® 36 Easybox

98325950



**Inspector® 36**  
Very robust and flexible camera head for pipelines from 50 mm

98325299



**Reel**  
·combi-cable  
·ø 8/4.5 mm  
·cable length 30-60 m  
·guide holder

98325930



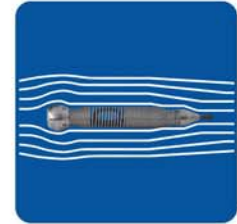
**Easybox DVR**  
·text entry  
·10.4" LCD display  
·DVR recorder USB  
·USB interface laptop

FUNCTIONALITY >

< INSPECTION SYSTEM



90 degree bends from ø50 mm



Streamlined shape for optimum feed-through



Guides for inspections to at least ø200 mm



Rounded corners for optimum feed-through



Large viewing angle (100°)



Guide holders



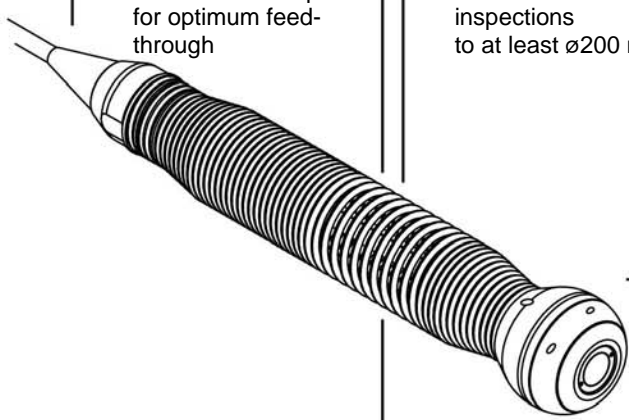
Transmitter 512 Hz (optional)



6 super bright white LEDs



Very robust spherical head



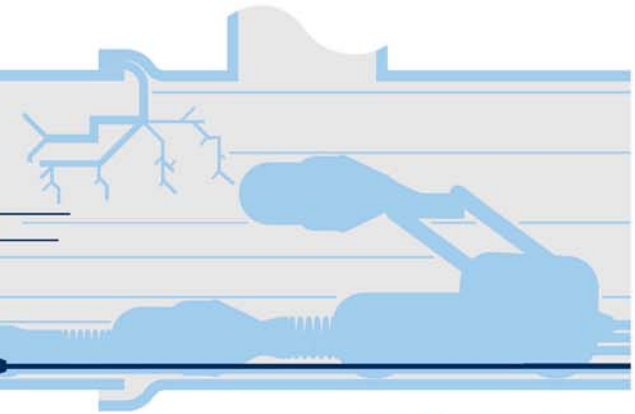
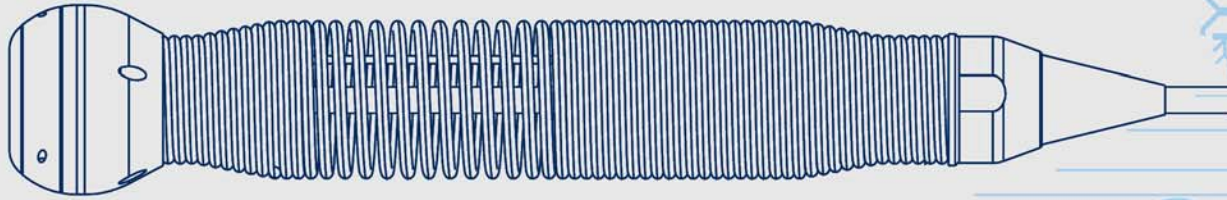
The robust *Inspector*® 36 is very suitable to inspect smaller pipelines thoroughly. The spherical camera head with flexible spring goes easily through right-angle bends from a diameter of 50 mm. Blockages and damage to pipes can thus be traced adequately. The working range of the camera is from 50 to at least 200 mm.

**Operation and functionality**  
The *Inspector*® 36 has a combi-cable with a diameter of 8 mm, while the internal fibre that ensures the stiffness is 4.5 mm thick. The combi-cable with camera head is thus suitable to be pushed through a right-angle bend of 50 mm. The sloping shape of the camera head assists the feed-through. There are two guides available with which the camera head comes to sit higher in the pipe. These can easily be taken along on the reel. If you choose to have the optional 512 Hz transmitter you are able to trace the camera head from above ground. The *Inspector*® 36 may easily be connected to an *Easybox*®. With the *Easybox*® you can view the images, enter texts and record everything on USB. It is also possible to provide only a video output on the reel so that you can connect your own monitor.

Check the demo movie:  
[www.camtronics.nl/download/36.wmv](http://www.camtronics.nl/download/36.wmv)



11-9-2012 9:51 98325569



# INSPECTOR<sup>®</sup> 36 Easybox



**Guide 50**  
for pipes  
from 75 mm



**Guide 70**  
for pipes  
from 110 mm



**Inverter**  
from 12V to  
230V

## SPECIFICATIONS >

### Inspector<sup>®</sup> 36

material	stainless
diameter (external)	36 mm
length	29 mm
color CCD camera	450 TV lines
objective	f2,1/F2,5
viewing angle	(hvx) 100° x 82°
focus	fixed
glass	(hardened) 2 mm
lighting	6 super bright white LEDs
light sensitivity	1 Lux
waterproof	maximum 5 bar
transmitter	512 Hz in spring (optional)
temperature (usage)	-10 - 45 °C
temperature (storage)	-10 - 60 °C

### Reel

dimensions	55x27x65 cm
material	metal galv., aluminium
weight	7 kg (30 m cable)
brake	ajustable
holder	for camera, for guides
cable	combicable glasfiber/electric
diameter of combi-cable	8 mm with 4,5 mm glasfiber
cable length	30 - 50 m
meter counter on screen	prepared
cable monitorbox	3 m with connector

### Easybox DVR

dimensions	52x38x22 cm
monitor	10,4" TFT LCD
monitor viewing angle	mechanical adjustable
light control	electronic
power in (mains)	230V AC ground conn.
video in/out	BNC
meter counter on screen	included
textgenerator with small PC keyboard	included
DVR with remote control	included
USB interface, digitize images with software user interface	included
remote control and OSD	EN, DE, NL, ES, FR, IT
languages	record (pause), OTR
recording functions	.MPG (MPEG codec)
video format	25 fps (PAL)
frame rate	16 Gb
recording USB stick (max)	approx. 30 min/Gb
memory recording capacity	approx. 4 Mbps
video bit rate	720x576 pixels (D1)
recording resolution	0 - 45 °C
temperature (usage)	0 - 50 °C
temperature (storage)	10,5 kg
weight	

## < ACCESSORIES

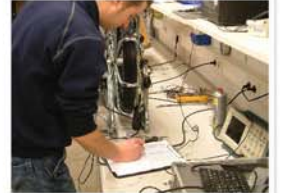
**Inspector<sup>®</sup> development philosophy**  
Inspector<sup>®</sup> systems are developed to reflect the end user's requirements. During development, continuous improvement of ease of use and functionality is aimed at. In this, productivity of use is key. Durability is essential and is also tested in our test centre. The necessary wear components are easily replaceable by you or by our service centre.

### Service

A camera system is used in severe circumstances. Service and maintenance is thus essential. Our own service centre in Son (near Eindhoven, the Netherlands) can assist you in this. Repair time is thus minimal and you are informed in advance about the costs. If desired, loan/ hire systems are available.

**Camtronics BV**  
Ekkersrijt 3209  
5692 CG - Son  
The Netherlands

**Tel: +31(0)499-494590**  
**Fax: +31(0)499-494591**  
**e-mail: info@camtronics.nl**



[www.camtronics.nl](http://www.camtronics.nl)

98330033

98330034

98322263

98325569

11-9-2012 9:51

**Inspector<sup>®</sup> systems are a Camtronics BV product. Customer-specific modifications are therefore possible!**